

GE Series

GE25 thru GE45



The Koike Aronson GE25 to GE45 series of Geared Elevation Positioners are designed for lighter weight applications and portability.

These Geared Elevation Positioners allow work to be performed at the lowest possible level which makes welding both faster and safer. Along with precision elevation control, these Positioners allow simultaneous table tilt and rotation. Operators may easily access any section of a weldment eliminating the need for ladders and platforms.

All Koike Aronson Geared Elevating Positioners are engineered for safety, precision, performance and unsurpassed durability.

Capacities from 2,500 to 4,500 pounds

Features

- 135° powered forward tilt
- NEMA 12 Electricals
- Powered Geared Elevation for varying work height
- 90,000 psi aluminum-bronze low efficiency wormgear drive reduces back driving
- All steel welded gearboxes
- Low voltage hand control pendants
- 50:1 Variable speed drives
- AC brake motors



Standard hand pendant provided with all models



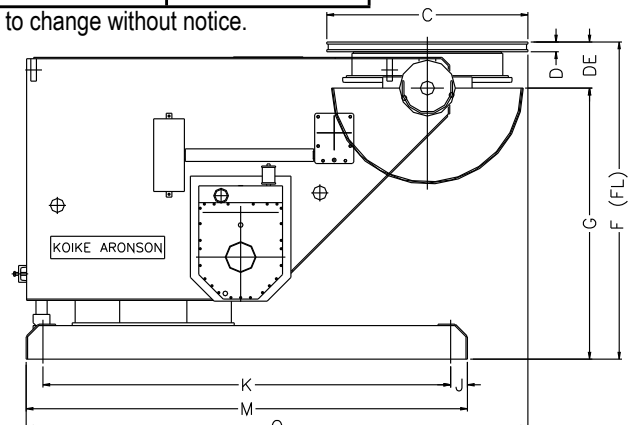
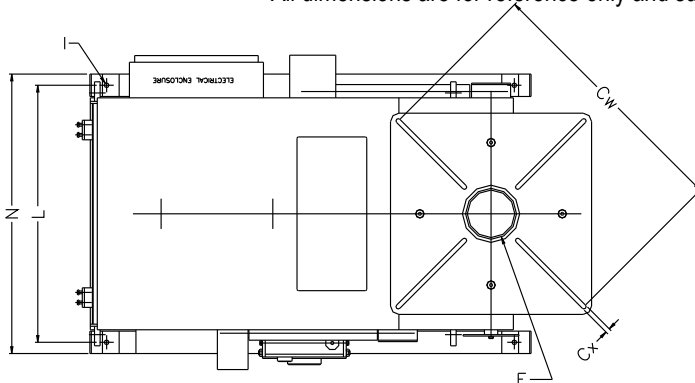
Optional foot switch controls available

Specifications

GE25 - GE45

SPECIFICATIONS	GE25VF	GE30VF	GE45VF
Tilt: Load Torque in-lb (N.m)	27,500 (3108)	60,750 (6864)	91,125 (10297)
Rating Lbs. (kg) @ 6" (152mm) CG Height	2,500 (1134)	-	-
Rating Lbs. (kg) @ 12" (305mm) CG Height	1,600 (726)	3,000 (1361)	4,500 (2041)
Rating Lbs. (kg) @ 18" (457mm) CG Height	1,200 (544)	2,500 (1043)	3,500 (1587)
Rating Lbs. (kg) @ 24" (609mm) CG Height	950 (431)	1,880 (853)	2,800 (1270)
Rating Lbs. (kg) @ 30" (762mm) CG Height	780 (354)	1,600 (726)	2,400 (1089)
Rating Lbs. (kg) @ 36" (914mm) CG Height	670 (304)	1,375 (624)	2,050 (930)
Rating Lbs. (kg) @ 42" (1067mm) CG Height	580 (263)	1,200 (544)	1,800 (816)
Rating Lbs. (kg) @ 48" (1219mm) CG Height	520 (236)	1,075 (488)	1,600 (726)
Rating Lbs. (kg) @ 54" (1371mm) CG Height	460 (209)	975 (442)	1,450 (658)
Rating Lbs. (kg) @ 60" (1524mm) CG Height	420 (190)	890 (404)	1,300 (590)
Rating Lbs. (kg) @ 66" (1676mm) CG Height	380 (172)	820 (372)	1,200 (544)
Rating Lbs. (kg) @ 72" (1829mm) CG Height	350 (159)	750 (340)	1,100 (499)
Rotation: Load Torque in-lb (N.m)	15,000 (1695)	36,000 (4068)	54,000 (6102)
Rating Lbs. (kg) @ 6" (152mm) Eccentric	2,500 (1134)	-	-
Rating Lbs. (kg) @ 12" (305mm) Eccentric	1,250 (567)	3,000 (1361)	4,500 (2041)
Tilt: 135° in how many seconds	19 Sec.	25 Sec.	25 Sec.
Tilt Motor Horse Power	1-½ HP	2 HP	3 HP
Rotation: Speed Range 50:1 AC Drive	2.0 - .040 rpm	1.2 - .024 rpm	1.2 - .024 rpm
Rotation Motor Horse Power	1 HP	1-½ HP	2 HP
Elevation: Constant Speed, IPM (mm/min)	34 (863)	30 (762)	30 (762)
Elevation Motor Horse Power	1-½ HP	2 HP	3 HP
Pendant cable length:	20 ft.	20 ft.	20 ft.
C: Table Size	36" Dia. (914mm)	36"x 36" (914 x 914)	42"x 42" (1067 x 1067)
CW: Maximum Clamping Diameter	33-¾" (857)	47" (1194)	55-½" (1410)
CX: Number of slots and width	(4) 25/32" (20mm)	(4) 13/16" (21mm)	(4) 13/16" (21mm)
Number of Table nuts and Thread	None	(4) 3/4"-10	(4) 3/4"-10
D: Table Thickness	1 (25)	1-3/4(44)	1-3/4(44)
E: Pilot hole and depth	1.500 x 1" (38.1 x 25mm)	9.126 x 1" (232 x 25)	9.126 x 1" (232 x 25)
DE: Inherent Overhang	5 (127)	8-1/4 (209)	8-1/4 (209)
Spindle OD Bearing Bore	2-3/8 (60)	10 (254)	10 (254)
Hollow Spindle Dia	1-1/2 (38)	8-½" (216)	8-½" (216)
Weld Current Conduction	1500 Amps	2000 Amps	2000 Amps
F: Table flat, Minimum Height	35 (889)	52-3/4 (1340)	52-3/4 (1340)
Table flat, Maximum Height	59 (1499)	85-3/4 (2178)	85-3/4 (2178)
Lift Stroke	24" (610)	33" (838)	33" (838)
G: Rotation axis, Minimum Height	30" (762)	44-½" (1130)	44-½" (1130)
Rotation axis, Maximum Height	54" (1372)	77-½" (1968)	77-½" (1968)
I: Tie down hole size	(4) 13/16" (20.6mm)	(4) 13/16" (20.6mm)	(4) 13/16" (20.6mm)
J: Front Mounting hole location	1" (25)	3 (76)	3 (76)
K: Rear mounting hole location	53" (1346)	73" (1854)	73" (1854)
L: Rear bolt hole pattern pitch	41-1/2 (1054)	46" (1168)	46" (1168)
M: Overall base length	55 (1397)	79 (2007)	79 (2007)
N: Overall Base width	43 (1092)	50 (1270)	50 (1270)
O: Overall machine length	68-1/2 (1740)	89-1/2 (2273)	92-1/2 (2349)
Standard Primary Voltage	460/3/60	460/3/60	460/3/60
Shipping Weight	2700 lbs. (1225 kg)	5400 lbs (2449 kg)	5622 lbs (2550)

***All dimensions are for reference only and subject to change without notice.



 Koike Aronson Inc.

P.O. Box 307, Arcade, New York 14009
 Phone (585) 492-2400 Fax (585) 457-3517
www.koike.com

GE Series

GE60 Thru GE250



The GE60 to GE250 Models are Koike Aronson's midrange lineup and are the most popular series with their large capacities and yet compact size.

Geared Elevation Positioners allow work to be performed at the lowest possible level which makes welding both faster and safer. Along with precision elevation control, these Positioners enable simultaneous tilt and rotation. Operators may easily access any section of a weldment, eliminating the need for ladders and platforms.

All Koike Aronson / Ransome Geared Elevating Positioners are engineered for safety, precision, performance and unsurpassed durability.

Capacities from 6,000 to 25,000 pounds

Features

- 135° powered forward tilt
- NEMA 12 Electricals
- Powered Geared Elevation for varying work height
- 90,000 psi aluminum-bronze low efficiency wormgear drive reduces back driving
- All steel welded gearboxes
- Low voltage hand control pendants
- 50:1 Variable speed drives
- AC brake motors



Standard hand pendant provided with all models



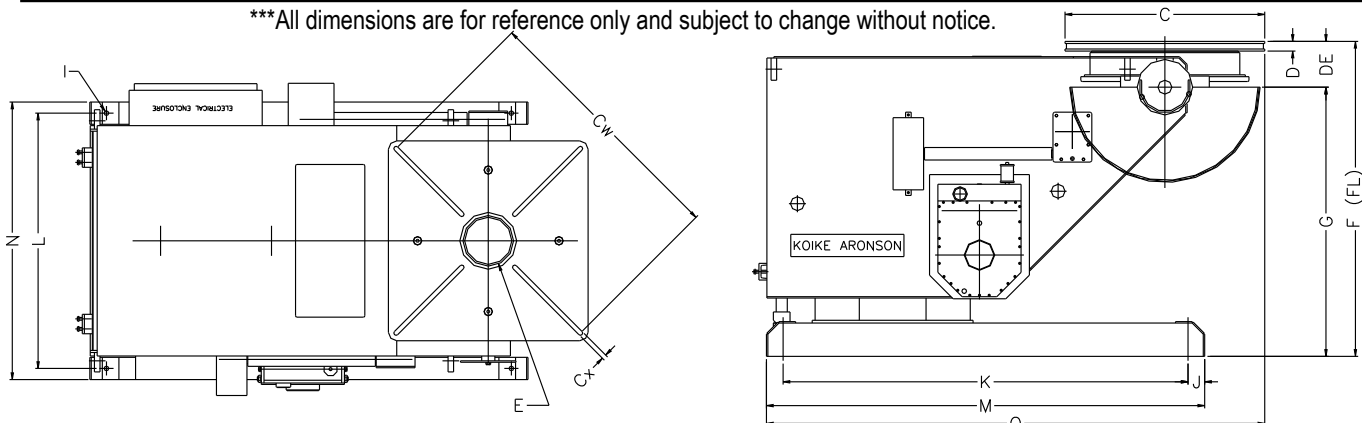
Optional foot switch controls available

Specifications

GE60 - GE250

SPECIFICATIONS	GE60VF	GE90VF	GE120VF	GE180VF	GE250VF
Tilt: Load Torque in-lb (N.m)	123,000 (13899)	184,500 (20848)	252,000 (28476)	369,500 (41753)	512,500 (57912)
Rating Lbs.(kg) @ 6" (152mm) CG Height	-	-	-	-	-
Rating Lbs.(kg) @ 12" (305mm) CG Height	6,000 (2721)	9,000 (4082)	12,000 (5443)	18,000 (8165)	25,000 (11340)
Rating Lbs.(kg) @ 18" (457mm) CG Height	4,650 (2109)	7,000 (3175)	9,300 (4218)	13,900 (6304)	19,400 (8800)
Rating Lbs.(kg) @ 24" (609mm) CG Height	3,790 (1719)	5,700 (2585)	7,600 (3447)	11,350 (5148)	15,800 (7167)
Rating Lbs.(kg) @ 30" (762mm) CG Height	3,200 (1451)	4,800 (2177)	6,450 (2926)	9,600 (4354)	13,300 (6033)
Rating Lbs.(kg) @ 36" (914mm) CG Height	2,750 (1247)	4,150 (1882)	5,600 (2540)	8,300 (3765)	11,500 (5216)
Rating Lbs.(kg) @ 42" (1067mm) CG Height	2,400 (1089)	3,650 (1656)	4,950 (2245)	7,300 (3311)	10,200 (4627)
Rating Lbs.(kg) @ 48" (1219mm) CG Height	2,200 (998)	3,250 (1474)	4,400 (1996)	6,500 (2948)	9,000 (4082)
Rating Lbs.(kg) @ 54" (1371mm) CG Height	1,900 (862)	2,950 (1338)	4,000 (1814)	5,900 (2676)	8,200 (3719)
Rating Lbs.(kg) @ 60" (1524mm) CG Height	1,700 (771)	2,700 (1225)	3,650 (1656)	5,400 (2449)	7,500 (3402)
Rating Lbs.(kg) @ 66" (1676mm) CG Height	1,600 (726)	2,480 (1125)	3,350 (1519)	4,950 (2245)	6,900 (3130)
Rating Lbs.(kg) @ 72" (1829mm) CG Height	1,500 (680)	2,300 (1043)	3,100 (1406)	4,600 (2086)	6,400 (2903)
Rotation: Load Torque in-lb (N.m)	72,000 (8136)	108,000 (12204)	144,000 (16272)	216,000 (24408)	300,000 (33900)
Rating Lbs.(kg) @ 6" (152mm) Eccentric	-	-	-	-	-
Rating Lbs.(kg) @ 12" (305mm) Eccentric	6,000 (2721)	9,000 (4082)	12,000 (5443)	18,000 (8165)	25,000 (11340)
Tilt: 135° in how many seconds	35 Sec.	47 Sec.	63 Sec.	47 Sec.	47 Sec.
Tilt Motor Horse Power	3 HP	3 HP	3 HP	7-1/2 HP	10 HP
Rotation: Speed Range 50:1 AC Drive	1.5 - .030 rpm	1.0 - .020 rpm	0.8 - .016 rpm	0.6 - .012 rpm	0.6 - .012 rpm
Rotation Motor Horse Power	5 HP	3 HP	5 HP	10 HP	10 HP
Elevation: Constant Speed, IPM (mm/min)	24 (610)	21 (533)	18 (457)	24 (610)	20 (508)
Elevation Motor Horse Power	3 HP	3 HP	5 HP	7-1/2 HP	10 HP
Pendant cable length:	20 ft.	20 ft.	20 ft.	20 ft.	20 ft.
C: Table Size	48" x 48" (1219 x 1219)	48" x 48" (1219 x 1219)	54" x 54" (1372 x 1372)	54" x 54" (1372 x 1372)	60" x 60" (1524 x 1524)
CW: Maximum Clamping Diameter	64 (1626)	64 (1626)	70 (1778)	70 (1778)	79 (2007)
CX: Number of slots and width	(4) 13/16" (21mm)	(4) 13/16" (21mm)	(4) 1-1/16" (27mm)	(4) 1-1/16" (27mm)	(4) 1-1/16" (27mm)
Number of Table nuts and Thread	(4) 3/4-10	(4) 3/4-10	(4) 1"-8	(4) 1"-8	(4) 1"-8
D: Table Thickness	2 (51)	2 (51)	2-1/2" (63)	2-1/2" (63)	2-1/2" (63)
E: Pilot hole and depth	9.126" x 1" (232 x 25)	9.126" x 1" (232 x 25)	9.127" x 1-1/2" (232 x 38)	9.127" x 1-1/2" (232 x 38)	8.625" x 1-1/2" (219 x 38)
DE: Inherent Overhang	8-1/2" (216)	8-1/2" (216)	8-1/2" (216)	8-1/2" (216)	8-1/2" (216)
Spindle OD Bearing Bore	10 (254)	10 (254)	10 (254)	10 (254)	10 (254)
Hollow Spindle Dia	8-1/2" (216)	9 (229)	9 (229)	9 (229)	8-1/2" (216)
Weld Current Conduction	2,000 Amps	2,000 Amps	2,000 Amps	2,000 Amps	2,000 Amps
F: Table flat, Minimum Height	55" (1397mm)	54-1/2" (1384mm)	55-1/2" (1410mm)	55-1/2" (1410mm)	57-1/2" (1460mm)
Lift Stroke	32-1/2" (826mm)	33" (838mm)	32-1/2" (826mm)	32-1/2" (826mm)	33" (838mm)
Table flat, Maximum Height	87-1/2" (2222mm)	87-1/2" (2222mm)	88" (2235mm)	88" (2235mm)	90-1/2" (2299mm)
G: Rotation axis, Minimum Height	46-1/2" (1181mm)	46" (1168mm)	47" (826mm)	47" (826mm)	49" (1245mm)
Rotation axis, Maximum Height	79" (2007mm)	79" (2007mm)	79-1/2" (2019mm)	79-1/2" (2019mm)	82" (2083mm)
I: Tie down hole size	(4) 13/16" (21mm)	(4) 13/16" (21mm)	(4) 1-1/8" (28mm)	(4) 1 1/8" (28mm)	(4) 1 1/16" (27mm)
J: Front Mounting hole location	3" (76mm)	3" (76mm)	3" (76mm)	3" (76mm)	3-3/8" (86mm)
K: Rear mounting hole location	74" (1880mm)	74" (1880mm)	74" (1880mm)	74" (1880mm)	89 1/2" (2273mm)
L: Rear bolt hole pattern pitch	41" (1041mm)	41" (1041mm)	47" (1194mm)	47" (1194mm)	80" (2032mm)
M: Overall base length	80" (2032mm)	80" (2032mm)	80" (2032mm)	80" (2032mm)	94-1/2" (2400mm)
N: Overall Base with	44" (1118mm)	44" (1118mm)	54" (1372mm)	54" (1372mm)	88-1/2" (2248mm)
O: Overall machine length	96-5/8" (2454mm)	96-5/8" (2454mm)	101-1/2" (2578mm)	100" (2540mm)	133" (3378mm)
Standard Primary Voltage	460/3/60	460/3/60	460/3/60	460/3/60	460/3/60
Shipping Weight	7670 lbs. (3479kg)	7700 lbs. (3492kg)	9500 lbs. (4309kg)	9,960 lbs. (4518kg)	17,520 lbs. (7946kg)

***All dimensions are for reference only and subject to change without notice.



 Koike Aronson Inc.

P.O. Box 307, Arcade, New York 14009
 Phone (585) 492-2400 Fax (585) 457-3517
www.koike.com

GE Series

GE500 Thru GE3500



The GE500 to GE3500 Models offer the largest capacities and range of elevations in the line of Koike Aronson Positioners.

Geared Elevation Positioners allow work to be performed at the lowest possible level which makes welding both faster and safer. Along with precision elevation control, these Positioners enable simultaneous tilt and rotation. Operators may easily access any section of a weldment, eliminating the need for ladders and platforms.

All Koike Aronson / Ransome Geared Elevating Positioners are engineered for safety, precision, performance and unsurpassed durability.

Capacities from 50,000 to 350,000 pounds

Features

- 135° powered forward tilt
- NEMA 12 Electricals
- Powered Geared Elevation for varying work height
- 90,000 psi aluminum-bronze low efficiency wormgear drive reduces back driving
- All steel welded gearboxes
- Low voltage hand control pendants
- 50:1 Variable speed drives
- AC brake motors



Standard hand pendant provided with all models



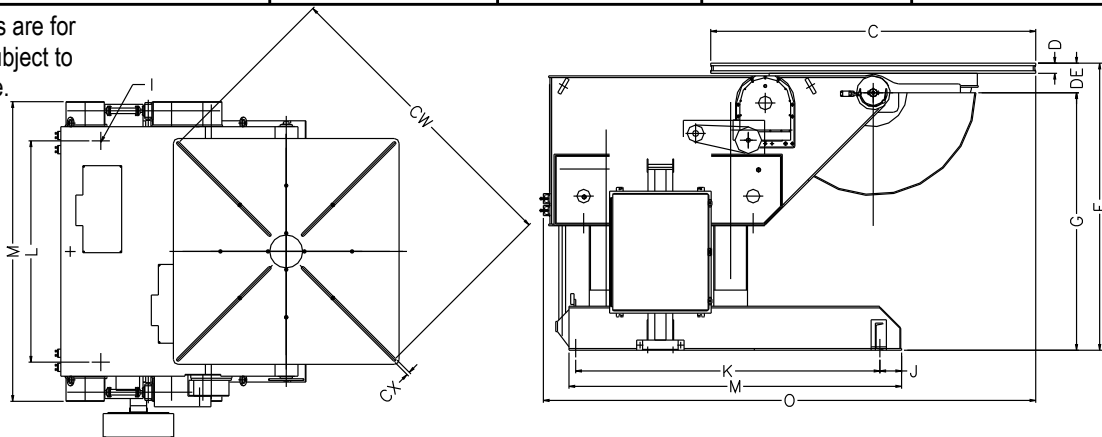
Optional foot switch controls available

Specifications

GE500 - GE3500

SPECIFICATIONS	GE500VF	GE850VF	GE1200VF	GE3500VF
Tilt: Load Torque in-lb (N.m)	1,050,000 (118650)	1,800,000 (203400)	2,880,000 (325440)	9,300,000 (1050900)
Rating Lbs.(kg) @ 12" (305mm) CG Height	50,000 (22680)	85,000 (38950)	120,000 (54431)	350,000 (158757)
Rating Lbs.(kg) @ 18" (457mm) CG Height	39,000 (17690)	66,100 (30014)	96,000 (43545)	286,000 (129727)
Rating Lbs.(kg) @ 24" (609mm) CG Height	32,000 (14515)	54,091 (24557)	80,000 (36287)	240,000 (108862)
Rating Lbs.(kg) @ 30" (762mm) CG Height	27,000 (12247)	45,769 (20779)	68,600 (31116)	210,000 (95254)
Rating Lbs.(kg) @ 36" (914mm) CG Height	23,400 (10614)	39,667 (18009)	60,000 (27215)	184,000 (83461)
Rating Lbs.(kg) @ 42" (1067mm) CG Height	20,600 (9344)	35,000 (15890)	53,400 (24222)	160,000 (72575)
Rating Lbs.(kg) @ 48" (1219mm) CG Height	18,500 (8391)	31,316 (14217)	48,000 (21772)	145,000 (65771)
Rating Lbs.(kg) @ 54" (1371mm) CG Height	16,700 (7575)	28,333 (12863)	43,600 (19777)	135,000 (61235)
Rating Lbs.(kg) @ 60" (1524mm) CG Height	15,200 (6895)	25,870 (11745)	40,000 (18144)	125,000 (56699)
Rating Lbs.(kg) @ 66" (1676mm) CG Height	14,000 (6350)	23,800 (10805)	37,000 (16783)	115,000 (52163)
Rating Lbs.(kg) @ 72" (1829mm) CG Height	13,000 (5896)	22,000 (9979)	34,200 (15513)	107,000 (48534)
Rotation: Load Torque in-lb (N.m)	600,000 (67800)	1,020,000 (115260)	1,440,000 (162780)	2,640,000 (298320)
Rating Lbs.(kg) @ 12" (305mm) Eccentric	50,000 (22680)	85,000 (38555)	120,000 (54431)	220,000 (99790)
Tilt: 135° in how many seconds	67 Sec.	140 Sec.	156 Sec.	300 Sec.
Tilt Motor Horse Power	15 HP	15 HP	25 HP	25 HP
Rotation: Speed Range 50:1 AC Drive	0.50 - .010 rpm	0.40 - .008 rpm	0.40 - .008 rpm	0.35 - .007 rpm
Rotation Motor Horse Power	15 HP	20 HP	25 HP	40 HP
Elevation: Constant Speed, IPM (mm/min)	20 (508)	17 (432)	15 (381)	10 (254)
Elevation Motor Horse Power	20 HP	25 HP	40 HP	150 HP
Pendant cable length:	20 ft.	20 ft.	20 ft.	20 ft.
C: Table Size	84" x 84" (2134x2134mm)	96" x 96" (3048x3048mm)	120" x 120" (3048x3048mm)	168" x 168" (4267x4267mm)
CW: Maximum Clamping Diameter	112" (2845mm)	128" (3251mm)	159" (4039mm)	224" (5690mm)
CX: Number of slots and width	(4) 1 5/16" (33mm)	(8) 1 5/8" (41mm)	(8) 1 7/8" (48mm)	(8) 2 1/8" (54mm)
Number of Table nuts and Thread	(4) 1 1/4" -7	(8) 1 1/4" -12	(8) 1 3/4" -12	(8) 2" -8
D: Table Thickness	2-3/4" (70mm)	3" (76mm)	5" (127mm)	5-1/2" (140mm)
E: Pilot hole and depth	12.253"x1-3/4" (311"x45mm)	12.255"x1 3/8"	12.255"x1"	20.000"x3"
DE: Inherent Overhang	8-3/4" (222mm)	9" (229mm)	12" (305mm)	14-1/2" (368mm)
Spindle OD Bearing Bore	14" (356mm)	14" (356mm)	14&20" (356 & 508mm)	100" (2540mm) O.D.
Hollow Spindle Dia	11-7/8" (301)	11-7/8" (301)	11/7/8" (301)	Slew Ring
Weld Current Conduction	3,000 Amps	3,000 Amps	3,000 Amps	3,000 Amps
F: Table flat, Minimum Height	58-1/2" (1486mm)	82" (2083mm)	98" (2489mm)	144" (3658mm)
Lift Stroke	33" (838mm)	54" (1372mm)	54" (1372mm)	92" (2337mm)
Table flat, Maximum Height	94-1/2" (2400mm)	136" (3454mm)	152" (3861mm)	236" (5994mm)
G: Rotation axis, Minimum Height	52-3/4" (1340mm)	73" (1854mm)	86" (2184mm)	129-1/2" (3289mm)
Rotation axis, Maximum Height	85-3/4" (2178mm)	127" (3226mm)	140" (3556mm)	221-1/2" (5626mm)
I: Tie down hole size	(2) 1-1/16" (27)	None	None	None
J: Front Mounting hole location	None	None	None	None
K: Rear mounting hole location	96" (2438mm)	None	None	None
L: Rear bolt hole pattern pitch	98-1/2" (2501mm)	None	None	None
M: Overall base length	98-1/2" (2495mm)	148 3/4" (3778mm)	148 3/4" (3778mm)	297" (7544mm)
N: Overall Machine width	127-1/2" (3238mm)	137 1/2" (3492mm)	141 1/2" (3594mm)	184" (4674mm)
O: Overall machine length	134-3/4" (3423mm)	196-3/4" (4997mm)	209" (5309mm)	363" (9220mm)
Standard Primary Voltage	460/3/60	460/3/60	460/3/60	460/3/60
Shipping Weight	30,819 lbs. (13979kg)	41,000 lbs. (18597kg)	53,000 lbs. (24040kg)	234,000 lbs. (106141kg)

***All dimensions are for reference only and subject to change without notice.



 Koike Aronson Inc.

P.O. Box 307, Arcade, New York 14009
 Phone (585) 492-2400 Fax (585) 457-3517
www.koike.com